

NOHA

Noha Suite Hotel Riccione

Viale D'Annunzio, 223 - 47838 Riccione RN Italy
Tel. +39 0541 641 672
www.nohasuitehotel.it - info@nohasuitehotel.it

Residence Price List 2010

Corallo 2/6 beds	The apartment is located on the ground floor and is comprised of a comfortable bedroom with extra bed, large living-room with sofa-bed, armchair-bed and equipped corner kitchenette, bathroom with shower box. Ideal for groups of friends and families with children.
Ninfea 2/4 beds	Two-room apartment is comprised of bedroom, ample living-room with sofa-bed and equipped corner kitchenette, bathroom with shower box, comfortable balcony with lateral view.
Ninfea 2/6 beds	Three-room apartment with double access, two bedrooms- each one with its own bathroom and balcony, living-room with equipped corner kitchenette and sofa bed. The second bedroom has its own access and sofa-bed. Ideal for two couples of friends, or families with children accompanied by grandparents or a nanny.
Stella Marina 2/4 beds	Two-room suite with an elegant bedroom with king bed, ample living-room with lounge and equipped corner kitchenette, bathroom with shower box, two comfortable balconies with a splendid sea view.
Perla Superior 2/4 beds	Two-room suite situated on the first floor of the hotel, with an elegant bedroom with king bed, ample living-room with sofa-bed, lounge and equipped corner kitchenette, bathroom with shower box and a large 25 sqm terrace with sea view completely equipped for dinner beneath the stars and furnished with a comfortable chaise lounge.
Perla Attico 2/5 beds	Top floor of the building, completely private, for an intimate and exclusive stay. The penthouse suite is comprised of two bedrooms with independent access, two bathrooms one of which is fitted with a two seat hydro-massage shower, dining room with equipped kitchen and armchair bed, flat screen TV and ample panoramic terrace, perfect for dinner beneath the stars and private sunbathing.

	CORALLO Apartment 2/6 beds	NINFEA Apartment 2/4 beds		STELLA MARINA Suite 2/4 beds	PERLA Suite Superior 2/4 beds	Attico 2/5 beds
02/01 - 21/05	Euro 300.00	Euro 390.00	Euro 550.00	Euro 490.00	Euro 560.00	Euro 690.00
22/05 - 18/06	Euro 420.00	Euro 490.00	Euro 630.00	Euro 550.00	Euro 620.00	Euro 770.00
19/06 - 16/07	Euro 620.00	Euro 750.00	Euro 1050.00	Euro 900.00	Euro 1100.00	Euro 1350.00
17/07 - 23/07	Euro 750.00	Euro 850.00	Euro 1200.00	Euro 1000.00	Euro 1250.00	Euro 1500.00
24/07 - 06/08	Euro 950.00	Euro 1000.00	Euro 1300.00	Euro 1225.00	Euro 1350.00	Euro 1750.00
07/08 - 20/08	Euro 1150.00	Euro 1330.00	Euro 1600.00	Euro 1450.00	Euro 1500.00	Euro 2000.00
21/08 - 27/08	Euro 750.00	Euro 850.00	Euro 1200.00	Euro 1000.00	Euro 1250.00	Euro 1500.00
28/08 - 10/09	Euro 420.00	Euro 490.00	Euro 630.00	Euro 550.00	Euro 620.00	Euro 770.00
11/09 - 31/12	Euro 300.00	Euro 390.00	Euro 550.00	Euro 490.00	Euro 560.00	Euro 690.00

* Final Cleaning €60.00 - Linens (bath/bed) € 10 per person (weekly use)

* The kitchen should be left clean otherwise an amount of € 40.00 will be charged.

* On arrival, a refundable deposit of €200.00/apartment should be paid (refundable on departure if the furniture and apartment are in good order).

The above mentioned rates include:

- Daily free entrance to the hot area of Body&Mind SPA (for Stella Marina and Perla suites), outdoor heated swimming pool (for summer), laundry room, Technogym fitness zone, bike service, WiFi, 24h reception;
- In the apartments: TV, DVD, safe box, microwaves
- All taxes(energy, water, air condition)
- Daily free entrance to Beach Village water park (for summer)
- For the babies: stroller, changing table with pan, blender, baby bottle sterilizer.

Not included:

- Beach service: € 70.00 per week - 1 parasol and 2 sun beds
- Cradle: € 5.00 per day
- Baby chair: € 5.00
- Breakfast: € 5.00 per person per day
- Reserved parking place: € 5.00 per day (limited availability)
- Supplementary bed: € 140,00 per week

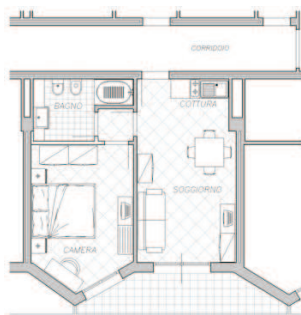
The above rates are per week for a stay arriving on a Saturday departing Saturday or Sunday to Sunday. For shorter or longer stays, please contact us!
Check in is from 1600 and check out no later than 1000 am.

The above rates are valid for a limited number of suites (except New Year's Eve, Easter, and official Italian holidays).

CORALLO
Apartment
2/6 beds - 44 m²



NINFEA
Apartment
2/4 beds - 39 m²



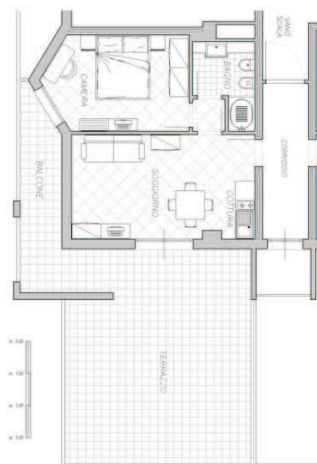
NINFEA
Apartment
2/6 beds - 50 m²



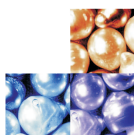
STELLA MARINA
Suite
2/4 beds - 39 m²



PERLA SUPERIOR
Suite
2/4 beds - 40 m²



PERLA ATTICO
Suite
2/5 beds - 60 m²



NOHA

Noha Suite Hotel Riccione

Viale D'Annunzio, 223 - 47838 Riccione RN Italy

Tel. +39 0541 641 672

www.nohasuitehotel.it - info@nohasuitehotel.it